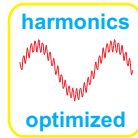


Einphasen
Hochstromdrossel
500 A 640 μ H

single-phase
high current choke
500 A 640 μ H

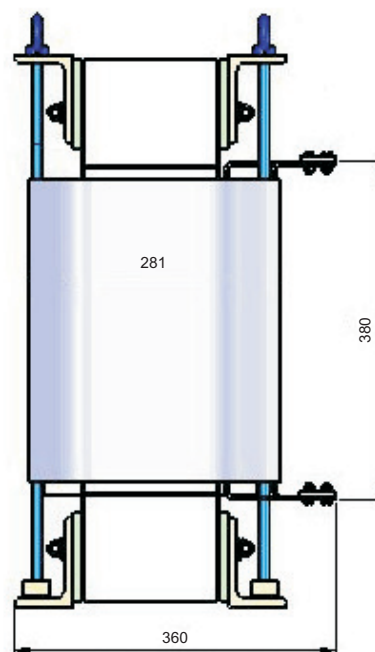
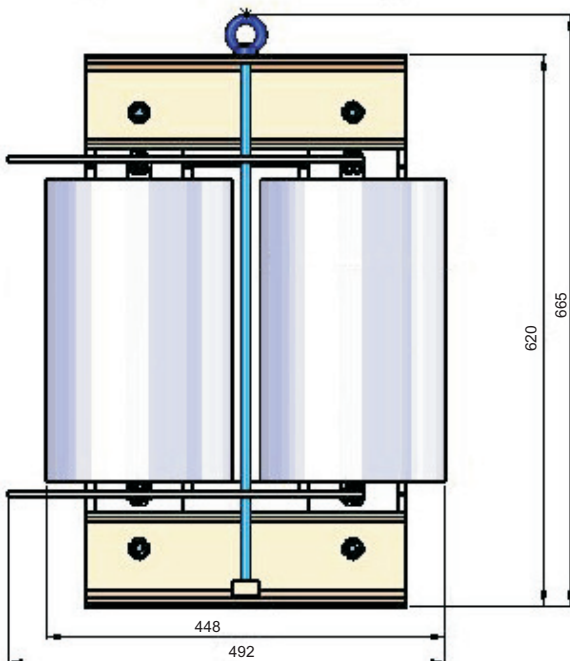
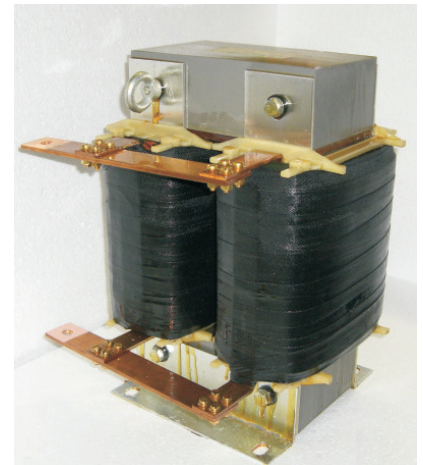
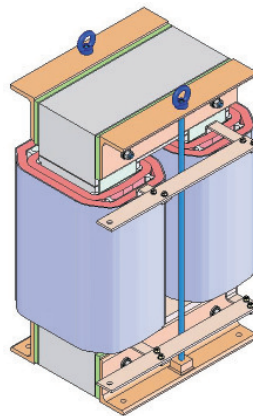
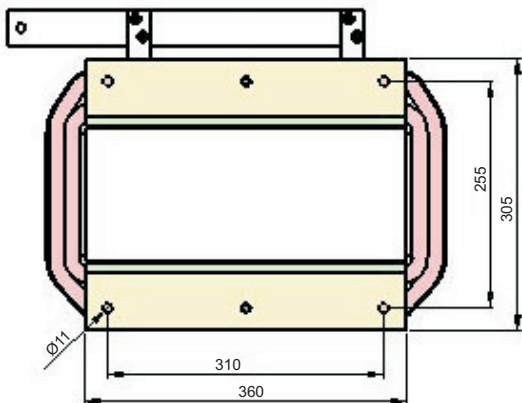


Technische Daten

Induktivität: L = 640 μ H
 Gleichstrom: I_{dc} = 300 A eff
 Wechselstrom: I_{ac} = 300 A ss
 Frequenz: f = 300 Hz
 Gewicht: G = 310 kg
 Wicklung: aus dünnem Kupferblech
 Kern: aus Lamellenblechen mit mehreren Luftspalten pro Schenkel
 Kühlung: AN (natürlich) ohne Ventilation
 Sättigungsfestigkeit: bis 1000 A

technical data

inductance: L = 640 μ H
 direct current: I_{dc} = 300 A eff
 alternating current: I_{ac} = 300 A ss
 frequency: f = 300 Hz
 weight: G = 310 kg
 winding: thin copper sheets
 core: rib plates with several air gaps on each limb
 cooling: AN (natural) without ventilation
 saturation consolidation: up to 1000 A



BV 24016001

BV 16211017
BV 19014003

Tauscher Transformatorenfabrik GmbH
 Gewerbegebiet Neureut
 D - 94078 Freyung

Tel.: +49 (0) 8551/91696-0
 Fax: +49 (0) 8551/91696-198

E-Mail: info@tauscher.com
 Internet: www.tauscher.com