

Schaltnetzteil 9VDC bis 60VDC-800W

switch-mode power supply 9VDC up to 60VDC-800W



- Features :
- AC 180~260VAC input
- PF> 0.98@ 230VAC
- Protections: Short circuit/ Overload/ Over voltage/ Over temperature
- Built in remote sense function
- Built-in remote ON-OFF control
- Power good signal
- With parallel function(N+1)
- Can adjust from 20~100% output voltage by external control 1-5V
- Forced air cooling by built-in DC fan
- 3 years warranty



SPECIFICATION

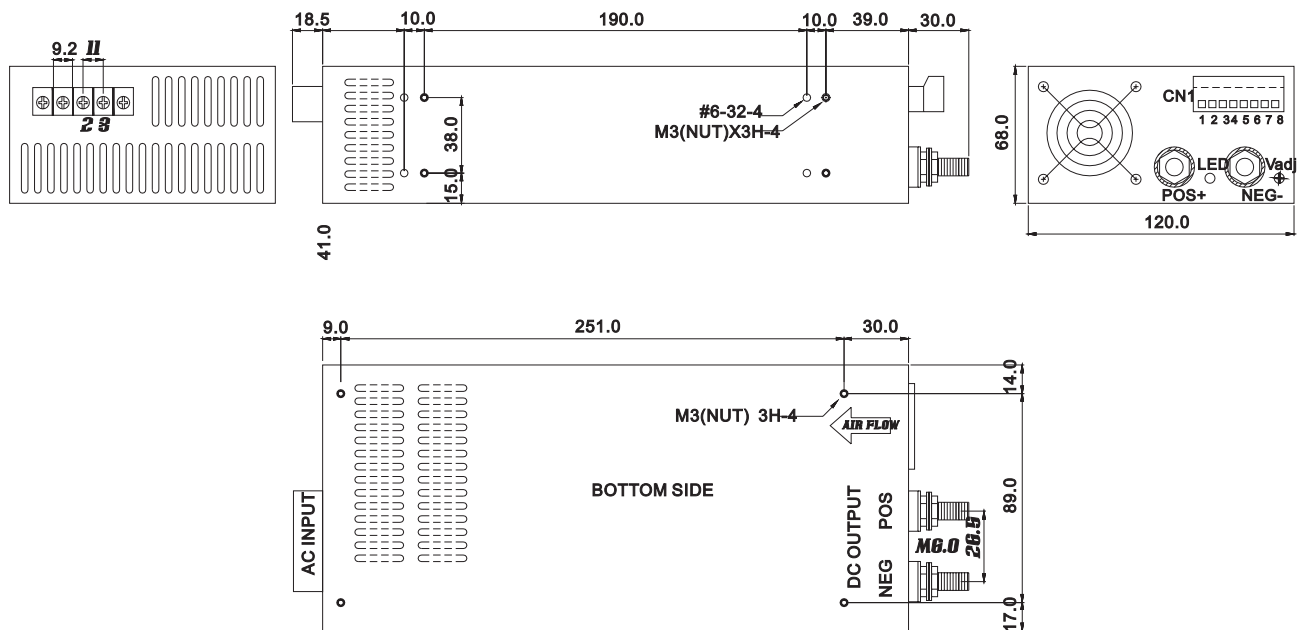
ORDER NO.	SCP-800-09	SCP-800-12	SCP-800-15	SCP-800-18	SCP-800-24	SCP-800-36	SCP-800-48	SCP-800-60	
OUTPUT	SAFETY MODEL NO.	800S-P009	800S-P012	800S-P015	800S-P018	800S-P024	800S-P036	800S-P048	800S-P060
	DC VOLTAGE	9V	12V	15V	18V	24V	36V	48V	60V
	RATED CURRENT	88A	66A	53A	44.4A	33A	22.2A	16A	13A
	CURRENT RANGE	0 ~ 88A	0 ~ 66A	0 ~ 53A	0 ~ 44.4A	0 ~ 33A	0 ~ 22.2A	0 ~ 16A	0 ~ 13A
	RATED POWER	792W	792W	795W	800W	792W	800W	768W	780W
	RIPPLE & NOISE (max. Noted)	20mVp-p	120mVp-p	150mVp-p	180mVp-p	240mVp-p	360mVp-p	480mVp-p	500mVp-p
	VOLTAGE ADJ. RANGE	±3.0% Typical adjustment by potentiometer 20% ~ 100% adjustment by 1 ~ 5VDC external control							
	VOLTAGE TOLERANCE (Noted)	±1.5%	±1.0%	±1.0%	±1.0%	±1.0%	±1.0%	±1.0%	±1.0%
	LINE REGULATION	±0.5%	±0.5%	±0.5%	±0.5%	±0.5%	±0.5%	±0.5%	±0.5%
	LOAD REGULATION	±1.0%	±0.5%	±0.5%	±0.5%	±0.5%	±0.5%	±0.5%	±0.5%
SETUP, RISE, HOLD TIME	800ms, 400ms, 12ms at full load								
INPUT	VOLTAGE RANGE	180 ~ 260VAC 260 ~ 370VDC see the derating curve							
	FREQUENCY RANGE	47 ~ 63Hz							
	POWER FACTOR	>0.98 / 230VAC							
	EFFICIENCY (Typ.)	83%	84%	85%	86%	88%	88%	89%	90%
	AC CURRENT	5.0A / 230VAC							
	INRUSH CURRENT (max.)	60A / 230VAC							
LEAKAGE CURRENT(max.)	3.5mA / 240VAC								
PROTECTION	OVER LOAD Note.4	105~115% rated output power Protection type : Current limiting, delay shut down o/p voltage, re-power on to recover							
	OVER VOLTAGE	110 ~ 135% Follow to output set up point Protection type : Shut down o/p voltage, re-power on to recover							
	OVER TEMPERATURE	>100 °C measure by heat sink, near transformer Protection type : Shut down o/p voltage, recovers automatically after temperature goes down							
ENVIRONMENT	WORKING TEMP.	-20 ~ +65 °C(Refer to output load derating curve)							
	WORKING HUMIDITY	20 ~ 90% RH non-condensing							
	STORAGE TEMP, HUMIDITY	-20 ~ +85 °C 10~95% RH							
	TEMP. COEFFICIENT	±0.04% / °C (0 ~ 50 °C)							
	VIBRATION	10 ~ 200Hz, 2G 10min./1cycle, 60min. each along X, Y, Z axes							
SAFETY & EMC (Note. 5)	SAFETY STANDARDS	UL60950, TUV EN60950-1 Approved							
	WITHSTAND VOLTAGE	I/P-O/P:3KVAC I/P-FG:1.5KVAC O/P-FG:0.5KVAC							
	ISOLATION RESISTANCE	I/P-O/P, I/P-FG, OP/FG:100M Ohms / 500VDC							
OTHERS	EMI CONDUCTION & RADIATION	Compliance to EN55022 (CISPR22) class A							
	HARMONIC CURRENT	Compliance to EN61000-3-2,3							
	EMS IMMUNITY	Compliance to EN61000-4-2,3,4,5,6,8,11, Light industry level , criteria A							
	POWER GOOD SIGNAL	Open collector of NPN transistor							
	SPECIAL FUNCTION	DC Voltage Adj., remote sensing, remote control, parallel operation(refer to control terminal instruction manual)							
NOTE	COOLING	By fan, >20% load or 250W fan on							
	MTBF	74.9K hrs min. MIL-HDBK-217C(25 °C)							
	DIMENSION	290*120*68mm (L*W*H)							
	PACKING	2.3kg; 8pcs / 20kg / CARTON							
NOTE	<ol style="list-style-type: none"> All parameters NOT specially mentioned are measured at 230VAC input, rated load and 25°C of ambient temperature. Ripple & noise are measured at 20MHz of bandwidth by using a 12" twisted pair-wire terminated with a 0.1uf & 47uf parallel capacitor. Tolerance : includes set up tolerance, line regulation and load regulation. Current limiting 3 times(1.5s,3.0s,5.0s)Then intelligent auto recovery before shut down The power supply is considered a component which will be installed into a final equipment. The final equipment must be re-confirmed that it still meets EMC directives. 								

Schaltnetzteil 9VDC bis 60VDC-800W

switch-mode power supply 9VDC up to 60VDC-800W

Mechanical Specification

Unit:mm



Terminal Pin. No. Assignment

Pin No.	Assignment
1	AC/L
2	AC/N
3	FG \pm

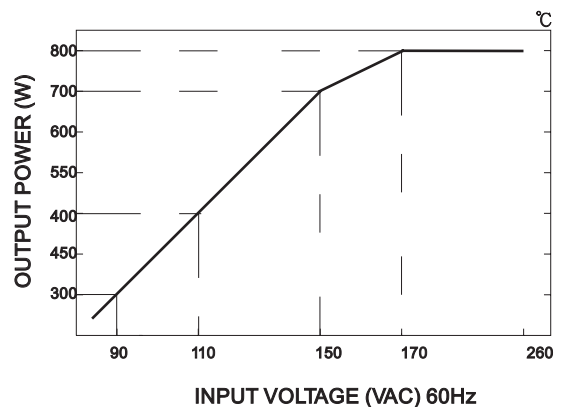
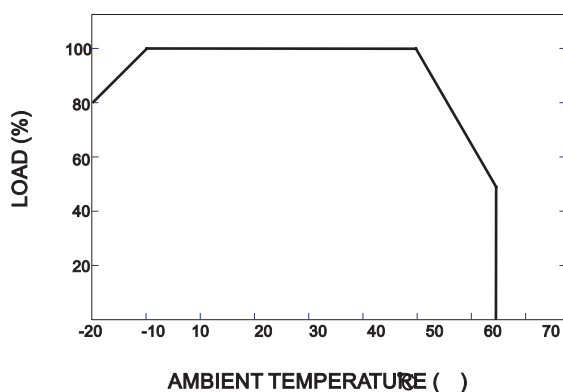
Ta=25

Control terminal Pin. No. Assignment (CN1) :

Dinkle 51HDBC-O8P or equivalent

Pin No.	Assignment	Pin No.	Assignment	Mating With
1	VS+	5	PG	Dinkle 51SDB-O8P or equivalent
2	VS-	6	PAR	
3	VCI	7	GND	
4	VCO	8	INH	

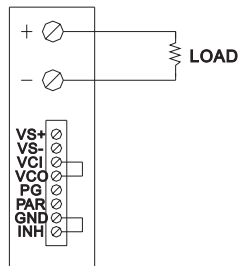
Derating Curve



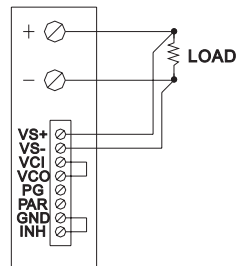
Schaltnetzteil 9VDC bis 60VDC-800W

switch-mode power supply 9VDC up to 60VDC-800W

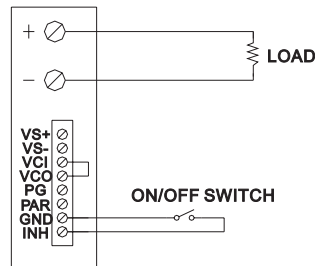
Control terminal instruction manual



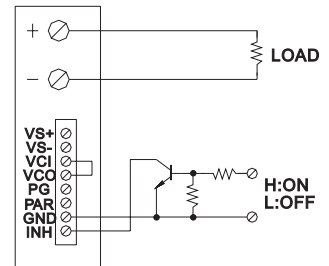
USING INTERNAL VOLTAGE CONTROL



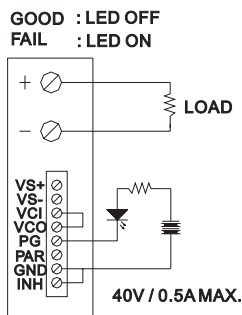
REMOTE SENSING



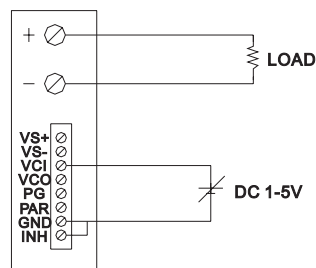
ON/OFF CONTROL BY SWITCH



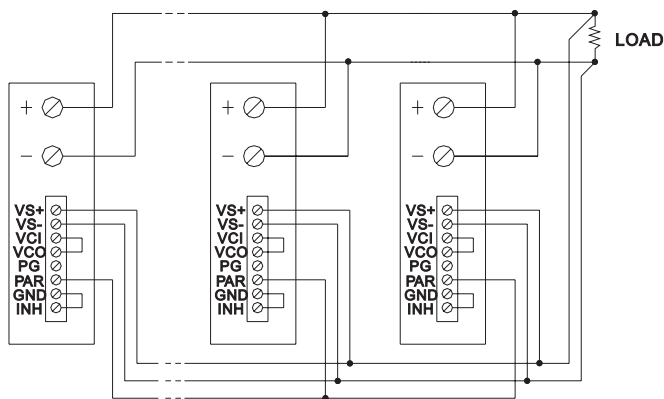
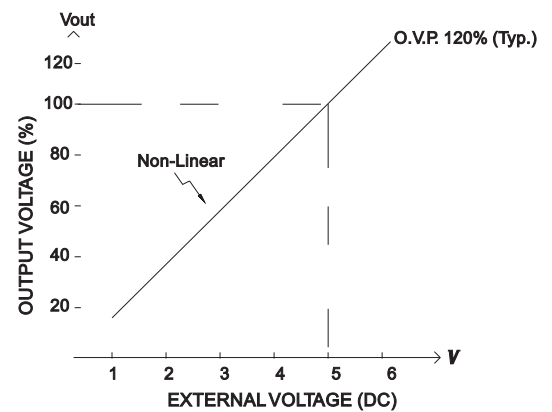
ON/OFF CONTROL BY TRANSISTOR



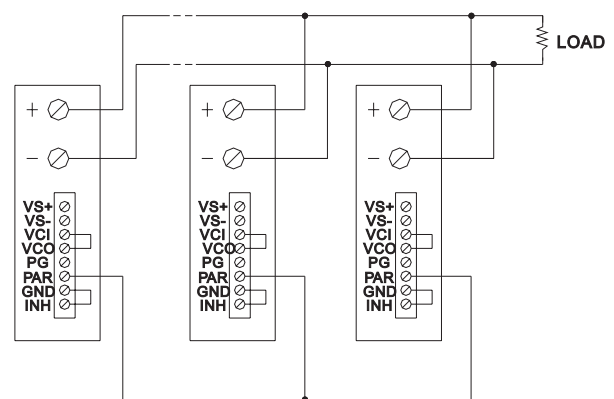
POWER GOOD SIGNAL



OUTPUT VOLTAGE ADJUST WITH DC 1-5V



PARALLEL OPERATION WITH REMOTE SENSING



PARALLEL OPERATION WITHOUT REMOTE SENSING